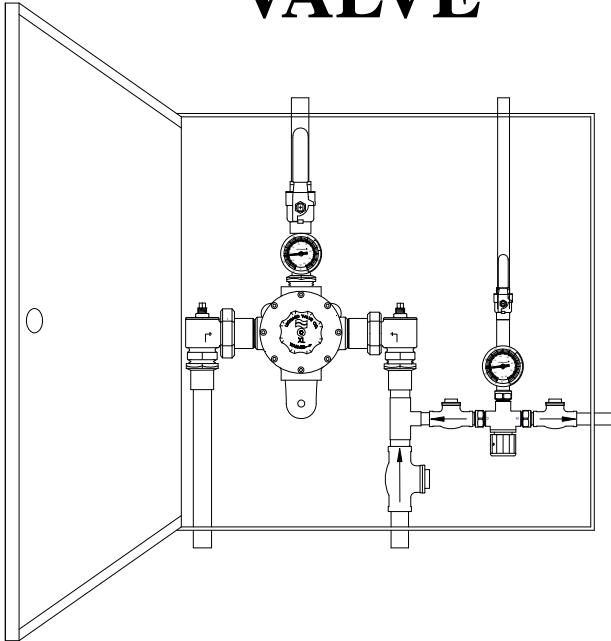


Thermostatic MIXING VALVE



Valve assembly is certified to meet Low-Lead requirements of wetted surface area containing less than 0.25% lead by weight. All other fittings and components, the sum total of which comprise the wetted surface of this product contains less than one quarter of one percent of lead by weight.

Note: Leonard Valve Company reserves the right of product, or design modifications without notice or obligation.

Product is non-cancellable and non-returnable from date from order with factory. Signed submittal required with purchase order.

**NOTE: For temperatures outside of this valve's stated range, please see our line of bi-metal valves.

Engineer's Approval	Job # _____
	Arch/Eng. _____
	Contractor _____

ECO-MIX™

XL-186-150-LF-DT-RF-R34-STSTL-EXP

Exposed Assembly

XL-186-150-LF-DT-RF-R34-STSTL-EXP

1 1/4" inlets and 1 1/2" outlet

- Group / Individual Shower Control Unit
- Thermostatic water mixing valve, 3 GPM (11.4 l/min) minimum flow capacity
- 1-1/4" inlets, 1-1/2" outlet (32mm x 38 mm)
- Copper encapsulated thermostatic assembly with Teflon coated shuttle
- Adjustable high temperature limit stop* set for 120°F (49°C)
- Temperature adjustment range, 95-135°F (35-57°C) **
- Combination checkstops, unions, strainers on inlets wall support, cast lever handle
- Outlet ball valve with thermometer
- 1" Return loop with thermometer
- Ball valve
- 3/4" Leonard ARV automatic return valve, (return limiter)
- Check valves on either side of ARV
- Complete unit mounted in an exposed stainless steel cabinet #4 finish with cylinder type lock
- Valve assembly rough bronze finish
- Factory assembled and tested
- See Flow Capacity Chart reverse side

OPTIONS:

___BWE-EXP Exposed baked white cabinet

NOTE: SFI and RP1 options and recessed cabinets NO LONGER AVAILABLE , 9/14

Valve is ASSE 1017 certified

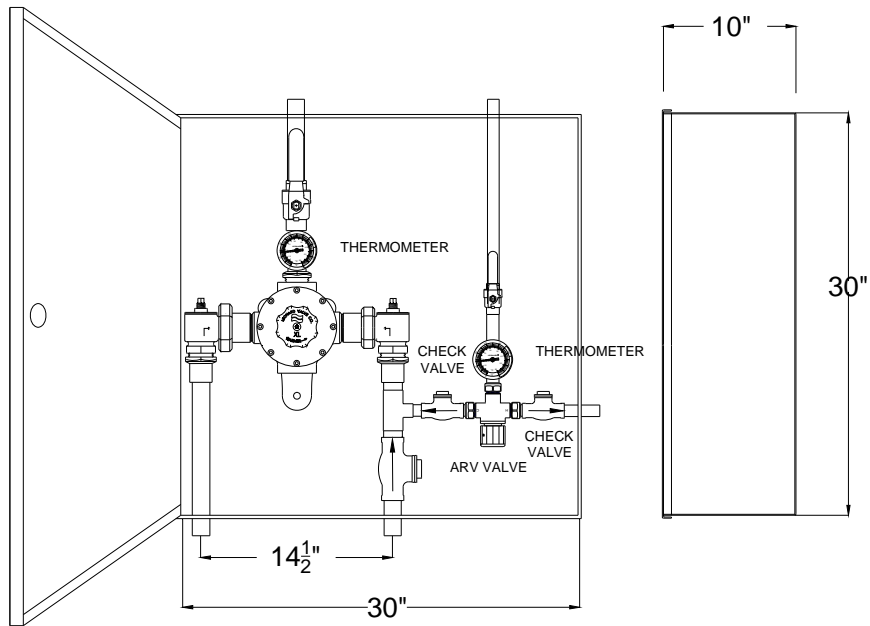


Valve is CUPC certified



WARNING: This product can expose you to chemicals including lead, which is known to the State of California to cause cancer. For more information, go to www.P65Warnings.Ca.gov

XL-186-150-LF-DT-RF-R34-STSTL-EXP



VALVE	PRESSURE DROP											
	MIN+ FLOW	5	10	15	20	25	30	35	40	45	50	PSI
		0.3	0.7	1	1.4	1.7	2.1	2.4	2.8	3.1	3.4	BAR
XL-150	3	44	61	74	86	95	103	110	117	124	130	GPM
	11.4	167	231	280	326	360	390	416	443	469	492	l/min



1360 Elmwood Avenue, Cranston, RI 02910 USA

Phone: 401.461.1200 Fax: 401.941.5310

Email: info@leonardvalve.com

Web Site: <http://www.leonardvalve.com>